



THINLINE LINEAR MUFFLERS



The compact design of the patented *Thinline Linear* muffler technology has made its mark in marine diesel engine exhaust technology. Its space-saving yet reliable performance in a range of diverse applications is unmatched in the industry. Marine Exhaust Systems continues to invest its technological expertise in the *Thinline Linear Series* muffler to further improve and develop this space-saving product line.

Muffler Sound Quality: Performs almost as well as the Thinline. Normal conversation heard over engine sound.

Application: Inline, preferably close to engine with enough room for surge tube in front.

Space Saver: Width of muffler same as inlet or smaller, length is very compact in comparison to Linear.

Horsepower: 1000 - 2600 HP.

Material: Biaxial E-Glass/Vinylester, fire-retardant (Class 1) Hetron FR 998 resin.

Gelcoat Finish Color: White - "Show Quality" finish available upon request.

Hose Connections: 316L Stainless crush resistant rings installed at all muffler hose connections.



Marine Exhaust Systems, Inc.

3640 Fiscal Court, Riviera Beach, Florida 33404 USA

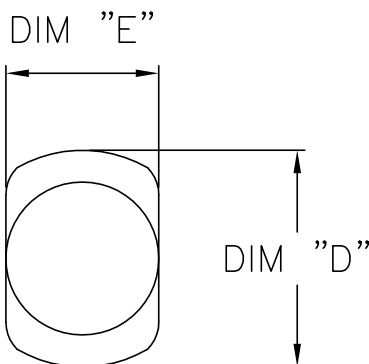
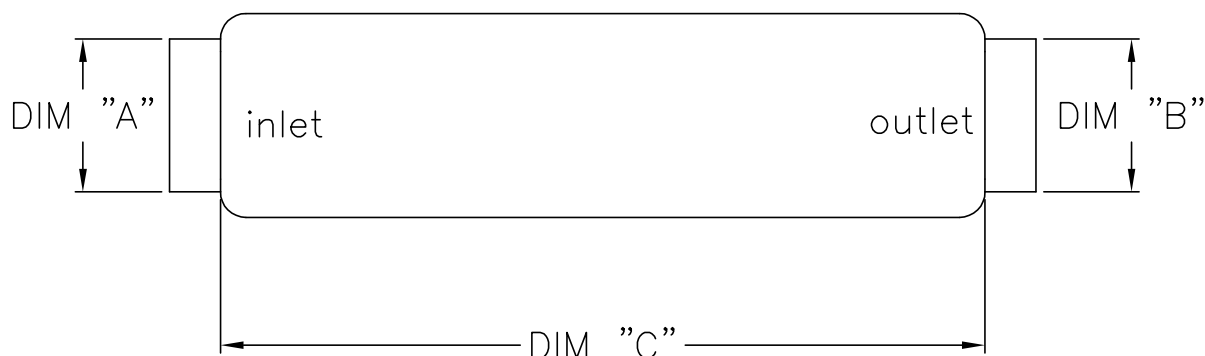
Toll Free (866) 845-3853 Phone (561) 848-1238 Fax (561) 848-1298 www.marine-exhaust.com info@marine-exhaust.com

MARINE EXHAUST SYSTEMS INC. IS THE ONLY EXHAUST MANUFACTURER THAT DESIGNS AND FABRICATES BOTH STAINLESS STEEL EXHAUST PIPE(S) AND FIBERGLASS COMPONENTS, SUPPLYING A TOTAL “TURBO TO TRANSOM ®” OR “TURBO TO UNDERWATER DISCHARGE” EXHAUST PACKAGE.

Quiet Zone Thin Line Linear Muffler Basic Dimensions

Model Number	Dimension “A” (Inlet)	Dimension “B” (Outlet)	Dimension “C”	Dimension “D”	Dimension “E”
TL10X19	12”	10”	60”	19”	10”
TL14X22	16”	14”	60”	22”	14”
TL20X22	16”	18”	68”	20”	22”

Other Inlet / Outlet Sizes and Configurations Available



Marine Exhaust Systems, Inc.

3640 Fiscal Court, Riviera Beach, Florida 33404 USA

Toll Free (866) 845-3853 Phone (561) 848-1238 Fax (561) 848-1298 www.marine-exhaust.com info@marine-exhaust.com